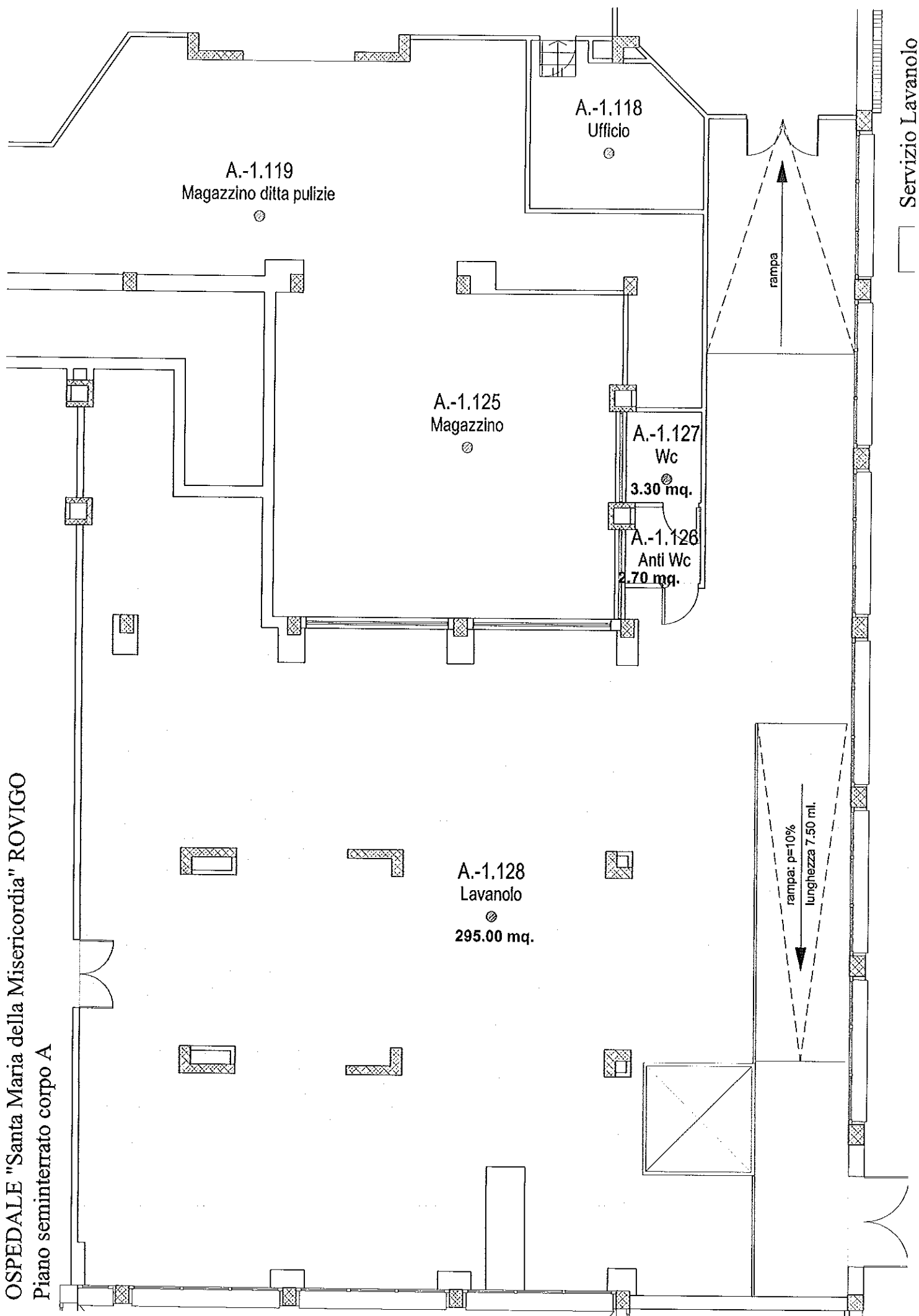
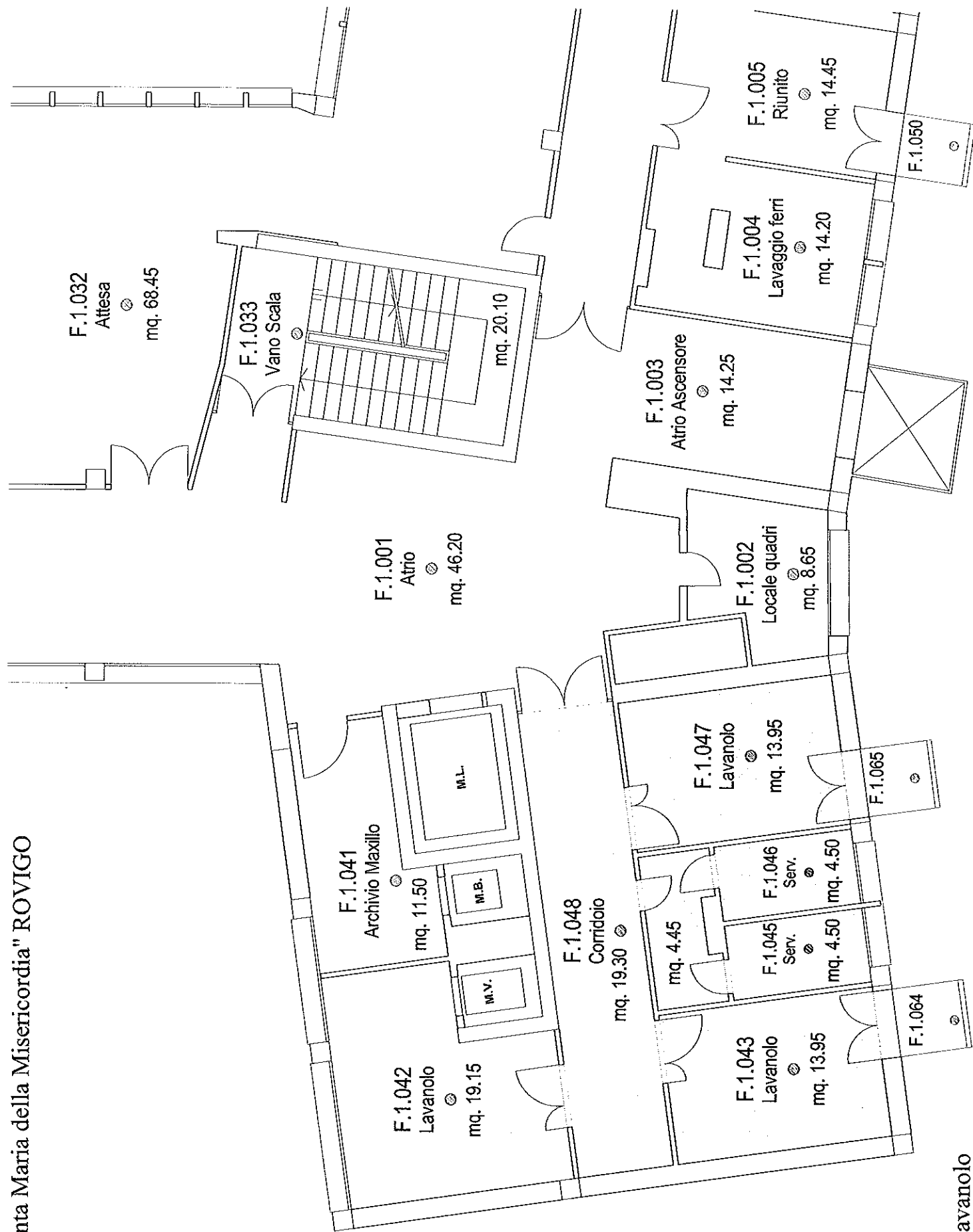


OSPEDALE "Santa Maria della Misericordia" ROVIGO
Piano seminterrato corpo A

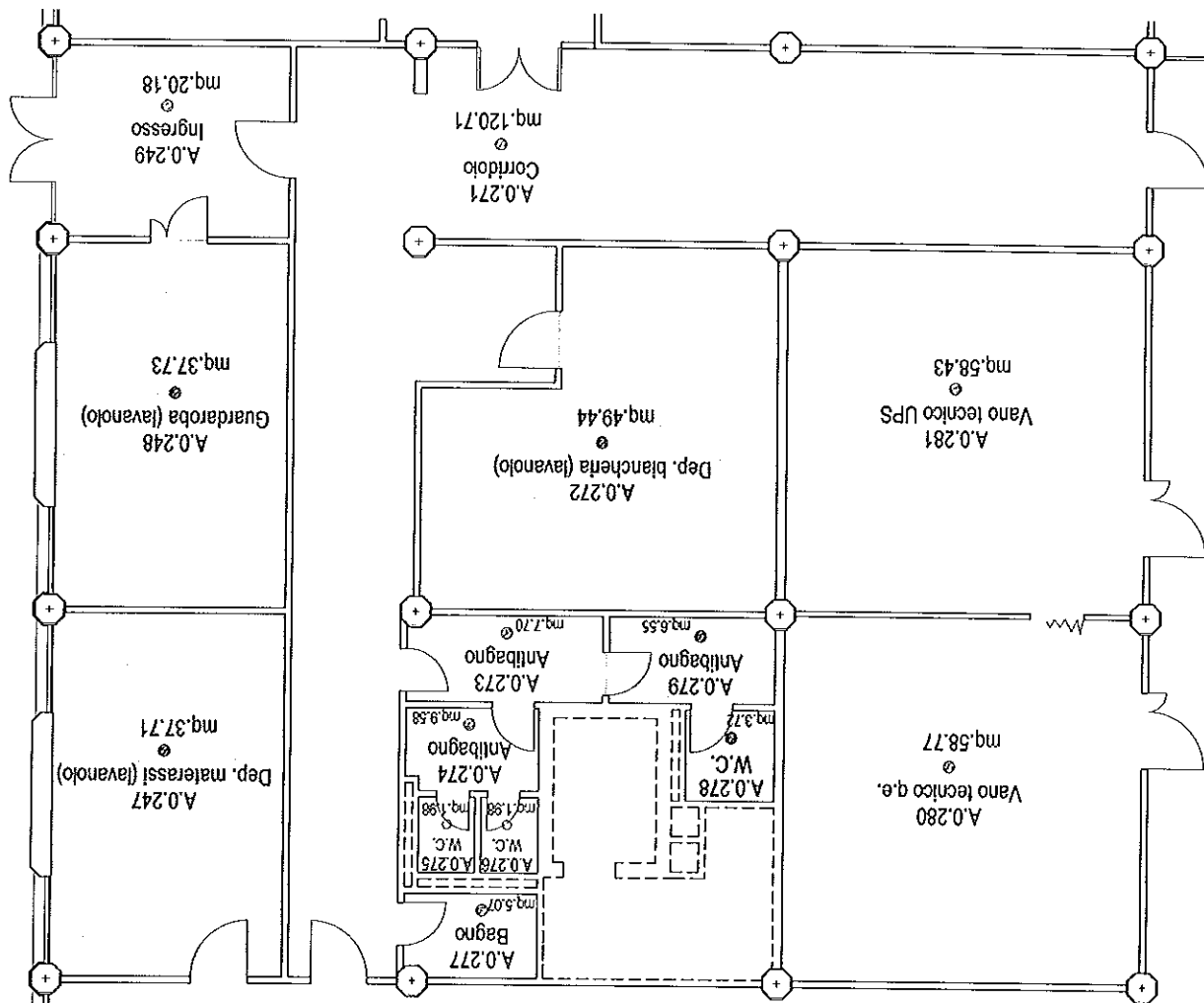


OSPEDALE "Santa Maria della Misericordia" ROVIGO
Piano I° corpo F



□ Servizio Lavano

OSPEDALE "SAN LUCA" DI TRECENTA



Servizio Lavanolo

PIANTA PIANO TERRA (MORGUE - MAGAZZINO ECONOMALE - GUARDAROBA)

LOCALI LAVANOLO

